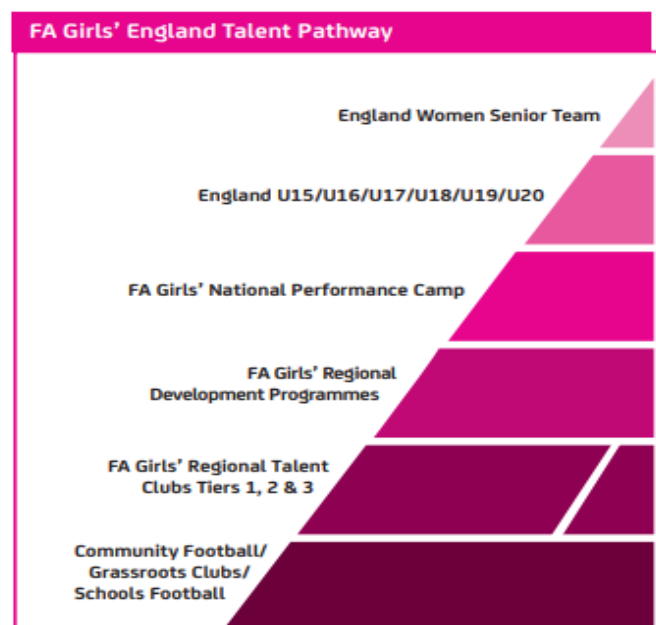


PATHWAY FOR FEMALE PLAYERS 16+

Tiki Taka Football Academy in association with Manchester FA

FA MISSION STATEMENT

To establish a world leading, sustainable female player development programme supported by an elite workforce, to create world class players and teams to compete and win on the global stage.

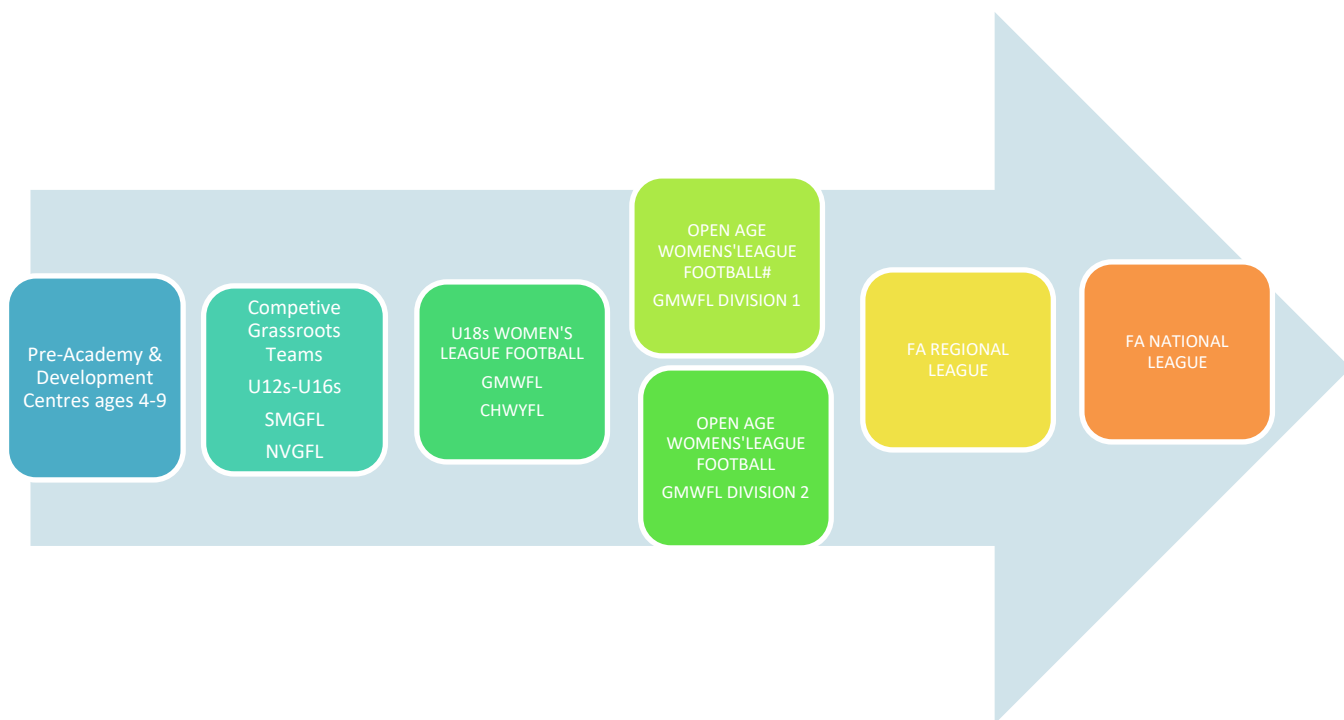


The FA Girls' England Talent Pathway has been put in place to support the identification and development of those with elite potential, and to ensure that appropriate playing opportunities are in place to enable players to fulfil their developmental needs and reach our ultimate goal in producing elite English female players to compete on the world stage. Whilst the pathway diagram shows the progression of a footballer from grassroots to England teams, we know that every player's journey is unique and influenced by a number of factors. All athletes develop at different rates and in different ways in all four-corners of the player's make-up (technical/tactical, physiological, psychological and social). Therefore our pathway allows girls to enter at different stages and ensures playing opportunities are appropriate to the needs of the player for them to develop and enjoy playing football.

Kath Jones
Manchester FA
Women's' & Girls Football Development Officer
0161 225 1966
Katherine.Jones@Manchester FA.com

Steve Young
Tiki Taka Football Academy
Chairman & Technical Director
07527 256029
tikitakayouthacademy@gmail.com

TTFA SPECIFIC PATHWAY



Time Scales

- In grassroots football, players may play 1 age group above their chronological age if it is deemed appropriate to their ability and confidence.
- Female players are eligible for U18s football if they are chronologically aged 15 by September 1st of the season in which they wish to play and if it is deemed appropriate to their ability and confidence.
- Open age football is available to female players if they are chronologically aged 16 by September 1st of the season in which they wish to play and if it is deemed appropriate to their ability and confidence.
- The placement of a team in Open Age GMWFL Division 1 or 2 is based upon their league results at the U18s age group.
- Any team opting to bypass the U18s age group would be ineligible for entry into Open Age GMWFL Division 1 in their first season. The two highest ranking teams in Division 2 are offered promoted to Division 1 at the end of each season.
- Application for entry into the FA Regional League is open to teams who finish in the top 3 of Open Age GMWFL Division 1 each season.
- The winner of the FA Regional League qualifies for the FA National League. Application for entry into the National League is open to teams who finish second or third in the FA Regional League each season.

Kath Jones
Manchester FA
Women's' & Girls Football Development Officer
0161 225 1966
Katherine.Jones@Manchester FA.com

Steve Young
Tiki Taka Football Academy
Chairman & Technical Director
07527 256029
tikitakayouthacademy@gmail.com